

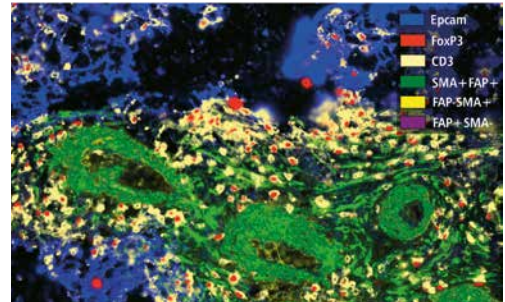
ZELLKRAFTWERK

One Technology – Multiple Applications



ZELLSCANNER ONE Instrumentation for Exploratory Studies

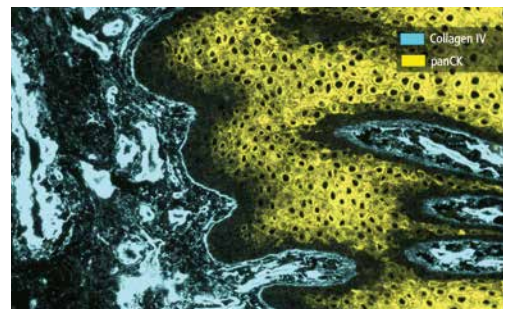
SYSTEM: Benchtop Instrument | OPERATION: Manual | APPLICATION: Exploratory / Phase I Trials



Breast Cancer

CYTOBOT Instrumentation for High-Throughput Screening

SYSTEM: Automated System | OPERATION: Fully Automated, 24/7 | APPLICATION: Phase II/III Trials



Psoriasis

MULTIPLEX TISSUE CYTOMETRY ASSAYS FOR PATHOLOGY RESEARCH

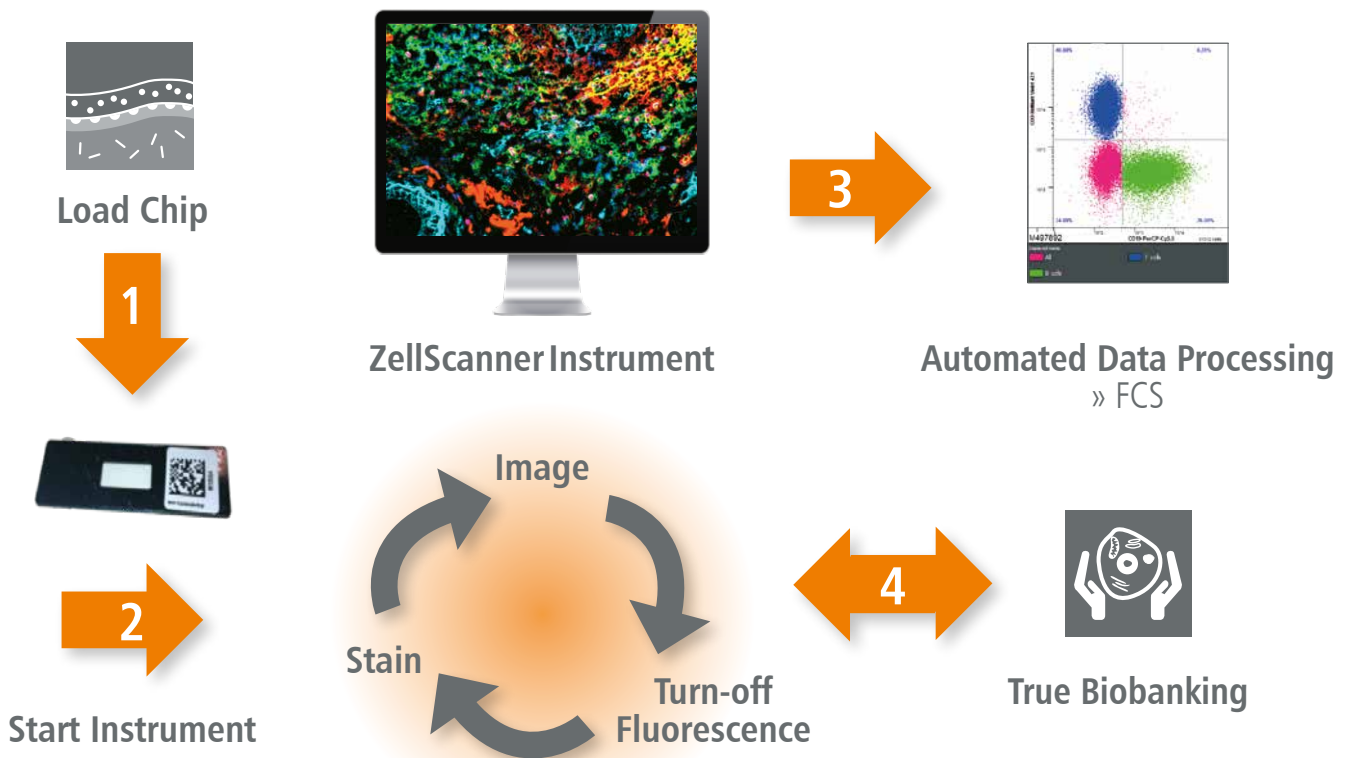
LONG-TERM STORAGE HIGH-PARAMETER PROFILING OF TISSUE

MULTIPLEXING OF UP TO 39 MARKERS

HIGH-PLEX IMMUNOFLUORESCENCE

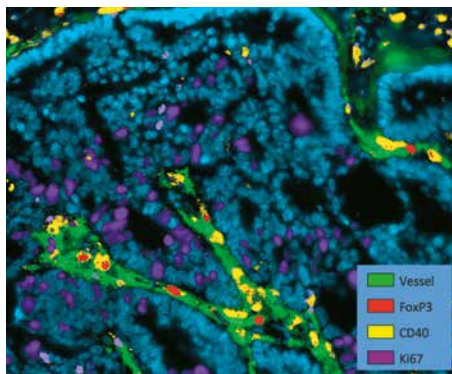
fully automated data processing unlimited reinterrogation/reanalysis

CHIPCYTOMETRY Sequential Multiplexing by Image Cytometry

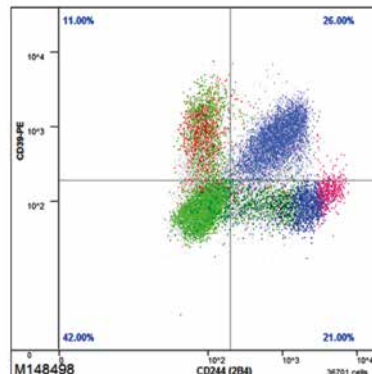


39-Plex Tissue Panel Immune Cell Phenotyping Panel

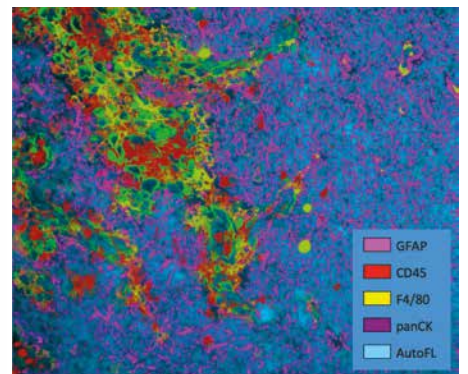
CD3	CD25	CD73	CD366 (Tim-3)
CD4	CD27	CD86	Collagen IV alpha
CD8	CD31	CD90	Cytokeratin 18
CD10	CD38	CD105	FAP- α
CD11c	CD39	CD141	FoxP3
CD14	CD45	CD153 (CD30L)	GATA3
CD15	CD45RA	CD196 (CCR6)	HLA-DR
CD19	CD45RO	CD278 (ICOS)	Pan-cytokeratin
CD20	CD56	CD279 (PD-1)	SMA (Smooth Muscle Actin)
CD21	CD68	CD326 (EpCAM)	



Colon Cancer



2D Dot Plot



Brain Tumor

